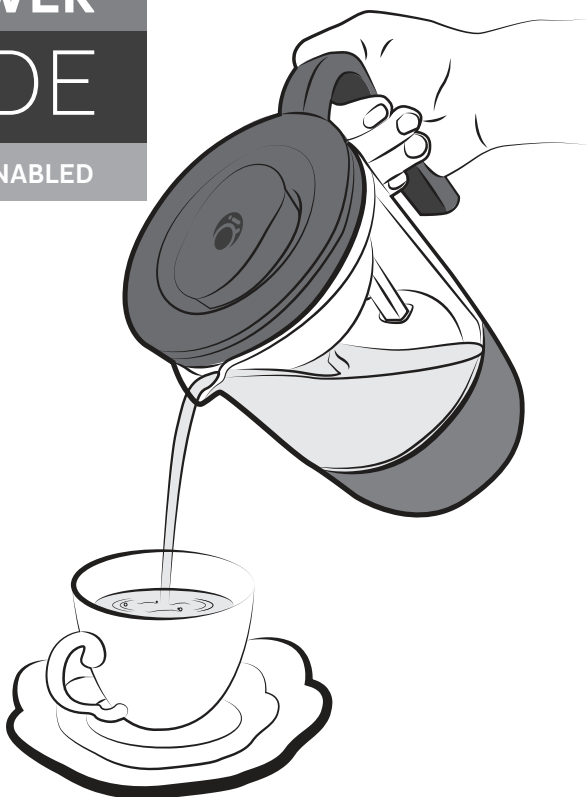




aerista

SMART TEA BREWER USER GUIDE

AROMATIC | AUTOMATIC | APP-ENABLED



QI AERISTA SMART TEA BREWER

Patented infusion system for getting
the taste just right

Fully customizable temperature and time

Programmable timer for
automatic brewing

CONTENTS

PAGE

Important Safeguards	-----	3-4
Brewer Parts	-----	5
Before First Use	-----	6-7
Usage – Brew Mode	-----	8
Usage – Keep Warm Mode	-----	9
Usage – Heat Mode	-----	9
Cleaning & Care	-----	10
Downloading The App	-----	11
Main Screen Features	-----	11
Login/Registration	-----	11
Brew Screen Features	-----	12
Connect Brewer	-----	12-13
Brewer Operations Overview	-----	13
Customize Temperature & Time	-----	13
Customize Brewer Settings	-----	14
Reservation Timer	-----	15
Profile Screen Features	-----	16
Tea Library Features	-----	17
Troubleshooting	-----	18
Warranty Policy	-----	19

PRODUCT INFORMATION

Model No.	QASTB18A01	QASTB18A02
Rated Voltage	100-120V	220-240V
Rated Power	694-1000W	840-1000W
Max. Capacity	0.70L/24oz	0.70L/24oz
Min. Capacity	0.23L/8oz	0.23L/8oz

THE DOS:

- ⊗ DO always read all instructions prior to first use.
- ⊗ DO always keep all plastic bags, covers and packaging material away from children to prevent choking hazard.
- ⊗ DO always ensure hands are dry before handling the Plug or pressing the buttons on the Base.
- ⊗ DO always ensure the Pot is properly placed and oriented correctly on the Base before operation. Then insert the Plug into wall socket.
- ⊗ DO always closely supervise children to ensure that they do not use or be near the Brewer without close adult supervision.
- ⊗ DO always keep the Brewer clear of walls, curtains and other heat or steam sensitive materials.
- ⊗ DO always ensure the mains supply voltage is the same as the one indicated on the Base.
- ⊗ DO always ensure the Flow Tube, Sheath, Spray Cap, and Filter are properly secured at their designated locations inside the Pot before brewing operation.
- ⊗ DO always fill the Pot with clean drinking water.
- ⊗ DO always ensure the Lid and Infuser are correctly aligned on the Pot and securely attached to the Pot during use especially when pouring. Hold down on the lid during pouring if necessary for added security.
- ⊗ DO always place tea leaves inside the Infuser and not directly inside the Pot.
- ⊗ DO always use the Pot Handle when handling the Brewer.
- ⊗ DO always exercise caution when touching the Pot Handle or Lid as they may become very warm during use.
- ⊗ DO always exercise caution of the steam and hot gases emitted from the Spout or around the Pot especially near the Pot Handle during use.
- ⊗ DO always exercise caution when moving the Pot containing hot liquid.
- ⊗ DO always exercise caution when pouring liquid from the Pot as boiling water and steam will scald.
- ⊗ DO always turn off the Brewer by pressing the ON/OFF button to OFF status. Then remove the Plug from socket when not in use or before cleaning.
- ⊗ DO always ensure the Brewer is cool before adding water, putting on or taking off parts, and cleaning. The Heating Plate is subject to residual heat after use.
- ⊗ DO always ensure the Brewer is only used in household and similar applications such as:
 - ⊗ staff kitchen areas in shops, offices and other working environments;
 - ⊗ farm houses;
 - ⊗ by clients in hotels, motels and other residential type environments;
 - ⊗ bed and breakfast type environments.
- ⊗ This appliance can be used by children aged from 8 years and above only if they have been given supervision or instruction concerning use of the appliance in a safe way and if they understand the hazards involved. Cleaning and user maintenance shall not be made by children unless they are older than 8 and supervised. Keep the appliance and its cord out of reach of children aged less than 8 years.
- ⊗ This appliance can be used by persons with reduced physical, sensory or mental capabilities or lack of experience and knowledge if they have been given supervision or instruction concerning use of the appliance in a safe way and understand the hazards involved.
- ⊗ DO always follow the **Cleaning & Care** section when cleaning any parts to the Brewer.

THE DON'TS

- ⊗ DO NOT use the Brewer for other than its intended use. The Brewer is designed and manufactured specifically for the purpose of heating and brewing drinking water and tea only. Any misuse of the Brewer may lead to product malfunction and/or injury.
- ⊗ DO NOT use the Brewer to heat or brew any other liquids or food.
- ⊗ DO NOT use accessory attachments that are not recommended by the manufacturer.
- ⊗ DO NOT use any app to connect and operate the Brewer other than official versions released by the manufacturer.
- ⊗ DO NOT let children play with the Brewer.
- ⊗ DO NOT alter any components of the Brewer.

- ⓐ DO NOT use the Brewer at places where water boils below 90°C/194°F (>2800m/9200ft above sea level).
- ⓐ DO NOT place the Brewer on or near a hot gas or electric burner, or in a heated oven or microwave oven, or in a refrigerator or freezer.
- ⓐ DO NOT let Power Cord hang over edge of table or counter, touch hot surfaces or become knotted.
- ⓐ DO NOT place the Brewer on an inclined surface.
- ⓐ DO NOT place the Pot and the Base on a wet surface.
- ⓐ DO NOT let the Pot when it is hot to get in touch with a cold surface.
- ⓐ DO NOT place the Pot directly on a gas or electric cooker or hot plate.
- ⓐ DO NOT pour or spill water onto the Connector.
- ⓐ DO NOT place anything on top of the Brewer.
- ⓐ DO NOT operate the Brewer with a damaged Power Cord or Plug, or after the Brewer has malfunctioned or has been damaged in any manner.
- ⓐ DO NOT operate the Brewer without water as it will damage the Brewer. Do ensure the Brewer is cooled down before refilling it with water.
- ⓐ DO NOT use a base unit other than the Base supplied with this Brewer.
- ⓐ DO NOT use the Brewer if the Pot is cracked or the Pot having a loose or weakened Pot Handle.
- ⓐ DO NOT insert any object into slots or holes of the Brewer.



To reduce the risk of fire or electric shock, DO NOT remove any fastened cover of the Pot or Base. Repairs should be done by authorized personnel only.

- ⓐ DO NOT move the Brewer while it is switched on.
- ⓐ DO NOT fill and operate the Brewer over the 'MAX' line marking on the Pot or below the 'MIN' line marking on the Pot. If the kettle is overfilled, boiling water may be ejected.
- ⓐ DO NOT add fine or powdery tea leaves inside the Brewer without using proper additional filters or tea bags.
- ⓐ DO NOT excessively tilt the Brewer after filling with water.



The Brewer generates heat during use. Proper precautions must be taken to prevent the risk of burns, scalds, fires or other damage to persons or property caused by touching the exterior while in use or during cooling.

- ⓐ DO NOT lift the Pot while it is heating or brewing.
- ⓐ DO NOT remove the Lid or Infuser when the Brewer is heating or brewing as hot water and steam will scald.
- ⓐ DO NOT leave the Brewer unattended when in use.
- ⓐ DO NOT place hand or other body parts under the Spout when pouring from the Brewer.
- ⓐ DO NOT clean the Pot with harsh cleansers, steel wool pads, or other abrasive material.
- ⓐ DO NOT push, bend or rub the Temperature Sensor inside the Pot when cleaning.
- ⓐ DO NOT turn the Pot upside down for drying as it may cause glass breakage.



To protect against electric shock, NEVER immerse the Pot, Base, Power Cord or Plug in water or allow moisture to come in contact with these parts

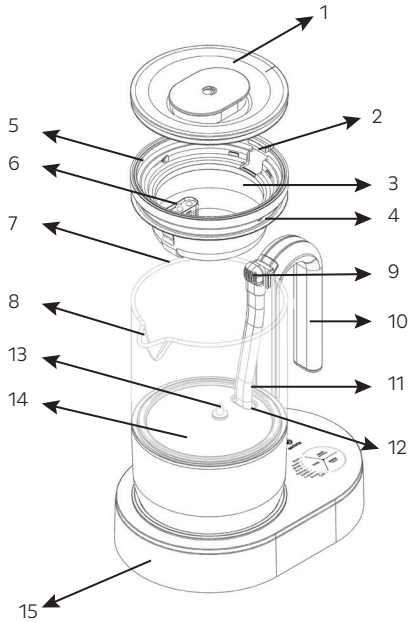


DO NOT wash the Pot exterior under running water.

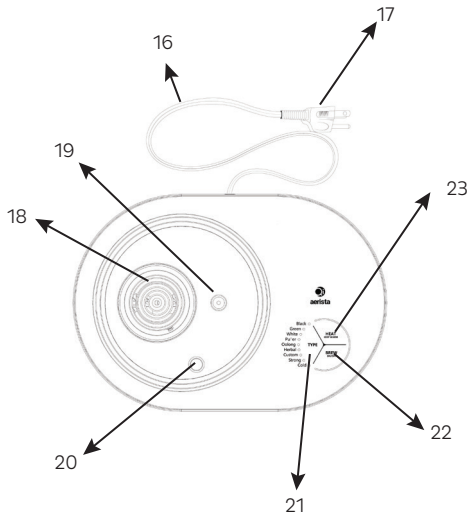
SHORT POWER CORD INSTRUCTIONS

- ⓐ As a safety precaution, a short Power Cord is provided to reduce the risks of personal injury or property damage resulting from pulling, entangled in or tripping with a longer cord.
- ⓐ An extension cord may be used if care is exercised. The marked electrical rating of the extension cord should be at least as great as the electrical rating of the Brewer. The extension cord should be grounding type 3-wire cord. The longer cord should be arranged so that it will not drape over the countertop or tabletop where it can be pulled on by children or tripped over. Do not connect multiple extension cords in series.
- ⓐ If the Power Cord is damaged, it must be replaced by the manufacturer, its service agent or similarly qualified persons in order to avoid a hazard.

**SAVE THESE INSTRUCTIONS
FOR HOUSEHOLD USE ONLY**



1. Lid
2. Infuser Tab
3. Infuser
4. Silicone Rubber Rim
5. Infuser Handle
6. Filter
7. Pot
8. Spout
9. Spray Cap
10. Pot Handle
11. Flow Tube with Sheath (hidden)
12. Cavity
13. Temperature Sensor
14. Heating Plate
15. Base
16. Power Cord
17. Plug (may differ according to version)
18. Connector
19. Positioning Pin
20. Drainage Hole



21. TYPE Button:

- ⊙ Select brewing program by tea type. A solid light will illuminate on the tea type selected.
- ⊙ Multiple blinking lights will illuminate when setting up app connection.

22. BREW (ON/OFF) Button:

- ⊙ Short press to start Brew mode (solid light will illuminate) or stop all operations.
- ⊙ Long press to turn on/off the Brewer.
- ⊙ Boil and Brew mode is on when fast blinking light is shown (App only).
- ⊙ Reservation Timer mode is on when slow blinking light is shown (App only).

23. HEAT (KEEP WARM) Button:

- ⊙ Short press to start Heat mode (solid light will illuminate) or stop Heat/Keep Warm mode.
- ⊙ Long press to start Keep Warm mode (slow blinking light will illuminate).
- ⊙ Boil and Cool mode is on when fast blinking light is shown (App only).

Please read the 'Important Safeguards' section before using the Brewer. Please follow the below instructions on setup and cleaning to prepare the Brewer for tea infusion.

PREPARATION FOR FIRST CLEANING

01

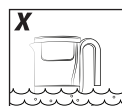
Remove and safely discard all packaging material and label(s) on the Pot before using the Brewer for the first time.

02

Remove the Lid, Infuser, Filter and Flow Tube gently from the Pot.

03

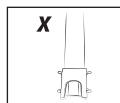
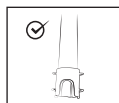
Wash the Lid, Infuser, Filter, Flow Tube and inside of the Pot with a soft sponge and warm fragrance-free soapy water. Rinse them with clean water.



NEVER immerse the Pot, Base, Power Cord or Plug in water or allow moisture to come in contact with these parts

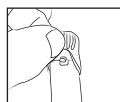
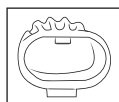
04

Ensure the Sheath is properly wrapped onto the bottom end of the Flow Tube.



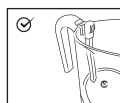
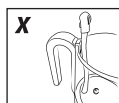
05

Ensure the Spray Cap is properly wrapped onto the top end of the Flow Tube.



06

Re-insert the Flow Tube back into the Pot.



07

Re-attach the Filter onto the Infuser, ensuring the clip on the Filter is properly clipped onto the sidewall of the Infuser.

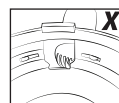
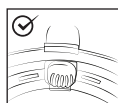


08

Fill the Pot up to the 'MAX' line marking on the Pot with clean water.

09

Gently secure the Infuser on the Pot. Always ensure the Spray Cap fits comfortably inside the Infuser without deformation. Improper positioning of the Spray Cap will diminish brewing results.



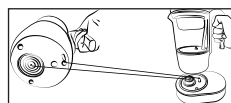
10

Secure the Lid tightly to the Infuser. Always first ensure the 2 stripes on the Lid align with Infuser Tab and the Infuser Tab fits inside the Lid slot. Gently press the Lid down and ensure it does not pop back up.



11

Place the Pot on the Base. Ensure the Connector and Positioning Pin are properly aligned with the bottom of the Pot.



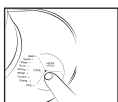
TURNING BREWER ON

12

Insert the Plug into a grounded wall outlet. You will hear a beep sound from the Brewer.

13

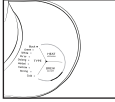
Turn on the Brewer by long pressing the 'BREW' button on the Base for 2 seconds until the light on 'Black' illuminates and a beep sounds. The Brewer is now on standby.



AUTO-CLEANING THE BREWER

14

Press 'BREW' again to start the brewing cycle for cleaning. A solid light will shine on the edge of 'BREW' button.



15

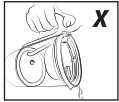
You will be alerted by 4 consecutive beeping sounds when the brewing cycle is completed. The Brewer will then enter Keep Warm mode. Press 'BREW' to end the Keep Warm mode.



Pot Handle and Lid may become very warm during use.

16

Remove the Pot from the Base by firmly gripping the Pot Handle. Completely discard the hot water.



NEVER pour water/tea out with the Lid open. When the Lid is open, the Spray Cap and the edge of the Infuser will drip water/tea that may cause injury due to scalding.

17

Let the Brewer cool down for at least 10 minutes. Remove the Lid and gently lift up the Infuser by the Silicone Rubber Rim. Fill the Pot again up to the 'MAX' line with clean water and re-attach the Lid and Infuser on the Pot securely.



18

With the light at 'Black' on, press 'BREW' to start the second brewing cycle.

19

After the second brewing cycle is finished, press 'BREW' to end the Keep Warm mode. Remove the Pot from the Base by firmly gripping the Handle. Completely discard the hot water.

20

Let the Brewer cool down for at least 10 minutes. Remove the Lid and the Infuser and squeeze on the Spray Cap to release any remaining water in the Flow Tube.



21

Now, the Brewer is ready to brew tea.

TURNING BREWER OFF

22

The Brewer will shut off automatically when no button is pressed within 15 minutes during standby.

23

To turn off the Brewer manually, long press 'BREW' for 2 seconds until a beep sounds and all lights are off.



ALWAYS ensure the Lid and the Infuser are securely attached to the Brewer during operation and pouring.



DO NOT fill the Pot while hot with chilled water. Allow the Pot to cool before refilling.



Filling past the maximum water level may result in serious burns or injuries as a result of overflowing hot water.

Please read 'Important Safeguards' and 'Before First Use' sections before proceeding with the Usage Guide.

BREW MODE

With preset temperature and time for different types of tea, the Brewer can brew your favorite teas with ease.

01

Remove the Lid and Infuser. Fill the Pot with clean drinking water within the 'MAX' and 'MIN' water level limits.



For best brewing results for Cold Brew and brewing temperatures below 60°C/140°F, add between 2 to 3 cups of water.

02

Secure the Infuser firmly on the top of the Pot. Ensure the Spray Cap fits comfortably inside the Infuser without deformation. Improper positioning of the Spray Cap will diminish brewing results.



03

Place tea leaves inside the Infuser. As a general guide, use 1 to 3 teaspoons of tea leaves per 1 cup (230mL/8oz) of water.



DO NOT add fine or powdery tea leaves inside the Brewer without proper additional filters or tea bags.

04

Secure the Lid tightly to the Infuser. Always first ensure the 2 stripes on the Lid align with Infuser Tab and the Infuser Tab fits inside the Lid slot. Gently press the Lid down and ensure it does not pop backup.

05

Place the Pot on the Base. Ensure the Connector and Positioning Pin are properly aligned with the bottom of the Pot.

06

Insert the Plug into a grounded wall socket. You will hear a beeping sound from the Brewer.

07

Turn on the Brewer by long pressing the 'BREW' button for 2 seconds until a light illuminates and a beep sounds.

08

Press 'TYPE' to toggle the desired tea type selection. A light will shine for the tea type selected. Hold 'TYPE' for more than 2 seconds to cycle through the tea types automatically.



09

Press 'BREW' to start the brewing program. Water will first be heated to the desired temperature. Then the brewing cycle will begin.

10

Brewing will continue for the preset brewing duration and ends with 4 beeps, unless it is stopped due to any of the following conditions:

- 'BREW' is pressed on the Base.
- The 'STOP' button is pressed on the app.



Note: If brewing stops prematurely, there will be hot water gathered in the Infuser. Before you open the Lid, DO always ensure (a) there is no water dripping out from the Infuser and (b) allow the Brewer to cool down for at least 10 minutes.

11

To serve, remove the Pot from the Base. Exercise caution when pouring out the hot tea. NEVER open the Lid and Infuser when pouring and DO NOT put your hand under the Spout.

12

For cleaning after use, please see the **Cleaning and Care** section.

PRESET BREWING PARAMETERS

Teas	Preset Temperature	Preset Time
Black	95°C/203°F	3 mins
Green	80°C/176°F	3 mins
White	85°C/185°F	3 mins
Pu'er	96°C/205°F	3 mins
Oolong	90°C/194°F	3 mins
Herbal	96°C/205°F	3.5 mins
Custom	95°C/203°F	2.5 mins
Strong	95°C/203°F	8 mins
Cold	25°C/77°F	10 mins



After brewing scented teas or teas with distinctive flavors, DO ensure a more thorough cleaning of the Brewer parts is done to prevent leftover flavors.



DO NOT place spice or any foodstuff inside the Pot or the Infuser as the Brewer is designed for heating water and brewing tea only.

KEEP WARM MODE

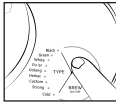
With Keep Warm mode, the Brewer will maintain at a preset keep warm temperature of 70°C/158°F for 60 minutes.

After brewing completes, the Brewer will automatically switch to Keep Warm mode. A slow blinking light on the edge of 'HEAT' on the Base will show. Note: Keep Warm mode does not apply to Cold Brew.

The Keep Warm mode will continue for the preset duration of 60 minutes and end with 2 beeps, unless it is stopped due to any of the following conditions:

- a) 'BREW' or 'HEAT' is pressed on the Base.
- b) 'STOP' button is pressed on the app.

To reactivate the Keep Warm mode, long press the 'HEAT' Button for 2 seconds until a slow blinking light appears and a beep sounds.



Before starting Keep Warm mode, always ensure the fluids inside the Pot are within the 'MAX' and 'MIN' levels.

HEAT MODE

The Brewer can function as a smart kettle to heat water to the preset temperature according to tea type. This option is optimal for teapot, gaiwan or mug brewing. Note: Heat mode does not apply for Cold Brew.

Remove the Lid and Infuser. Fill the Pot with clean drinking water within the 'MAX' and 'MIN' water levels.

Secure firmly the Lid and Infuser on the top of the Pot. Ensure the Spray Cap fits comfortably inside the Infuser.

Place the Pot properly onto the Base, ensure proper alignment of the Connector and Positioning Pin. Insert the Plug into a grounded wall socket.

04

Turn on the Brewer by long pressing 'BREW' on the Base for 2 seconds until a light illuminates and a beep sounds.

05

Press 'TYPE' to toggle the desired tea type selection. A light will shine for the tea type selected.

06

Press 'HEAT' to start heating water.

07

Note: A solid light will illuminate on the edge of 'Heat' button. If instead the light is slowly blinking, then it has entered Keep Warm mode. Switch back to Heat mode by pressing 'Heat' twice.

08

The Brewer will beep 3 times when the heating cycle is completed.

09

Remove the Pot from the Base and exercise caution in pouring out the hot water. NEVER open the Lid and Infuser when pouring and DO NOT put your hand under the Spout.

10

To stop the Brewer during the Heat cycle, you can apply either of the following procedures:

- a) 'BREW' or 'HEAT' is pressed on the base.
- b) The 'STOP' button is pressed on the app.

PRESET HEAT MODE PARAMETERS

Teas	Preset Temperature
Black	100°C/212°F
Green	85°C/185°F
White	90°C/194°F
Pu'er	100°C/212°F
Oolong	95°C/203°F
Herbal	100°C/212°F
Custom	100°C/212°F
Strong	100°C/212°F
Cold	N/A



The Heat mode and Keep Warm mode share the same button on the Base.



The Pot Handle and Lid may become very warm during and after the end of the keep warm or heating cycle.

Proper cleaning of the Brewer after every use is essential for maintaining the Brewer in its best condition for tea brewing.

CLEANING THE EXTERIOR

01

Always ensure the Brewer is completely turned off, the Plug is unplugged and the Brewer has cooled off for at least 10 minutes before opening the Lid and Infuser for cleaning.

02

Clean the exterior surface of the Pot (except for the bottom of the Pot) with a damp cloth and then dry with a soft cloth. DO NOT use steel wool pads or harsh/abrasive cleaners on any parts of the Brewer.



To protect against electric shock, NEVER immerse the Pot, Base, Power Cord or Plug in water or allow moisture to come in contact with these parts.



DO NOT wash the Pot exterior under running water.

CLEANING THE INTERIOR

03

Open the Lid. Gently remove the Infuser by grabbing by the Silicone Rubber Rim. Note: Always hold onto the Pot Handle when lifting up the Infuser Handle to prevent tumbling and breakage of the Pot.



04

Always discard wet tea leaves in the Infuser and any left-over teas in the Pot within 30 minutes after each brew.



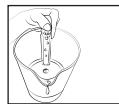
Note: When pouring out the remaining tea with the Lid opened, water droplets may come out from the Spray Cap.

05

Wash the Lid and Infuser in water and gently clean them by soft sponge or cloth. Remove the Filter for cleaning if necessary.

06

Rinse the inside of the Pot with warm water and clean it gently with soft sponge or cloth. When draining all the water of the Pot, always ensure to press on the Spray Cap to release any remaining water in the Flow Tube.



07

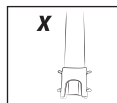
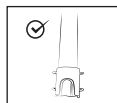
Let the Pot dry naturally. DO NOT turn the Pot upside down for drying as it may cause glass breakage.

08

For a more thorough cleaning, remove the Flow Tube and run water inside the tube. Squeeze the Spray Cap to drain out any remaining water inside the Flow Tube.

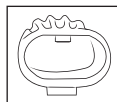
09

Ensure the Sheath is properly wrapped onto the bottom end of the Flow Tube.



10

Ensure the Spray Cap is properly wrapped onto the top end of the Flow Tube before re-inserting into the Pot.



11

Scale may build up in the Infuser, Flow Tube and Heating Plate. Therefore it is very important that you descale regularly using a commercially available descaler to upkeep the appearance, maintain functional efficiency and prevent appliance failure. Always follow the manufacturer's instructions carefully when descaling.



Always ensure the Brewer is cooled off before opening the Lid for cleaning.

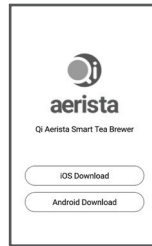


Only the Infuser, Filter, Spray Cap, Flow Tube, and Sheath are dishwasher safe.

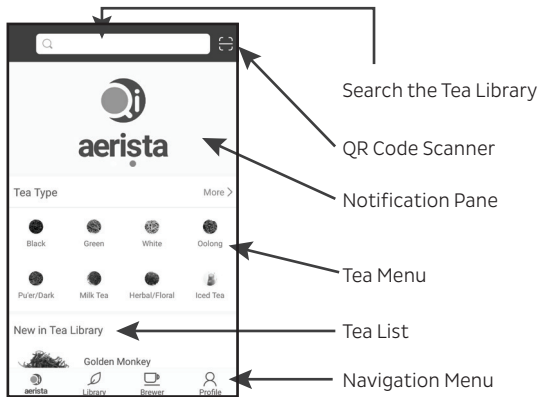
DOWNLOADING THE APP

**STEP 1**

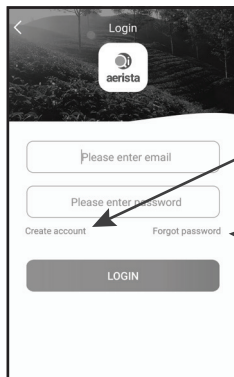
Scan this QR code with your smartphone.

**STEP 2**

Tap on iOS or Android button and follow onscreen instructions to install.

**MAIN SCREEN FEATURES**

After installing the app, run the app and you will land on the Main Screen. Tap on any area to login/register (refer to the steps in the next section). Key features on the Main Screen include:


**LOGIN/REGISTRATION**

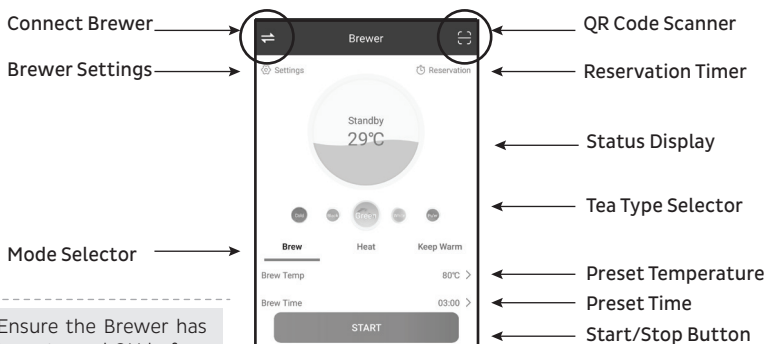
If you do not have an account, click 'Create account' and follow the onscreen instructions to create one.

If you already have a Qi Aerista app account, enter your email and password to log in.

If you have forgotten your password, click 'Forgot password' and follow the onscreen instructions to retrieve.

BREWER SCREEN FEATURES

Click on the Brewer icon  on the Main Screen to show the Brewer screen.



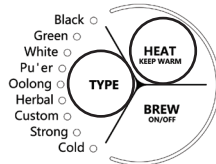
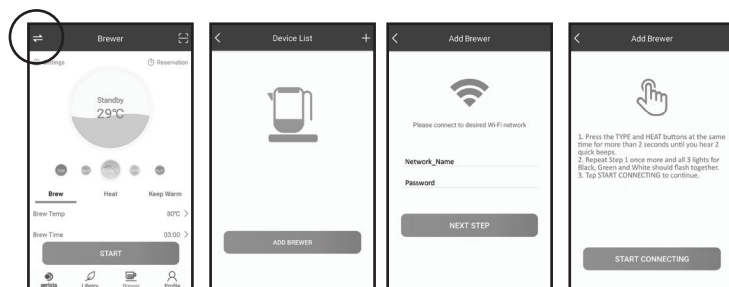
Ensure the Brewer has been turned ON before running any app-based Brewer operation.

CONNECT BREWER


To control the Brewer with the app, please follow the below instructions.



Ensure the Brewer and your smartphone are within range of the same Wi-Fi network for proper connection and operation. Ensure your smartphone is connected to this Wi-Fi network. Note: Brewer only works with 2.4GHz band Wi-Fi networks.



STEP 1

Tap on  icon.

STEP 2

Tap on 'ADD BREWER'.

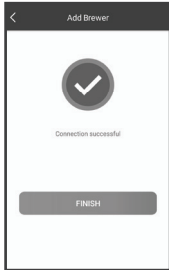
STEP 3

Enter your Wi-Fi password and tap on 'NEXT STEP'.

STEP 4

Ensure the Brewer is on. Press TYPE and HEAT at the same time on the Base for more than 2 seconds until you hear 2 quick beeps. Do this 2 times in total. All of the Black, Green and White lights will flash. Then, tap 'START CONNECTING'.

CONNECT BREWER (CONT'D)

**STEP 5**

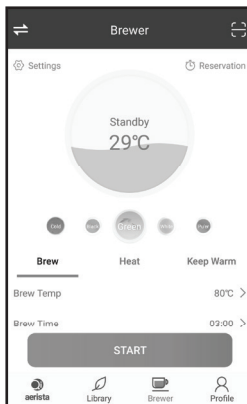
After successful connection, tap 'FINISH'.

**STEP 6**

Tap on 'Connected' to return to the Brewer Screen. If the Brewer Screen shows 'Offline', restart your app again. Now you are all set to control your Brewer!

BREWER OPERATIONS OVERVIEW

There are Brew, Heat and Keep Warm modes. The Brew mode is the automatic brewing function. The Heat mode enables you to use the Brewer as a variable temperature kettle. The Keep Warm mode allows you to maintain the tea at a specified temperature.



The Status Display shows the following:

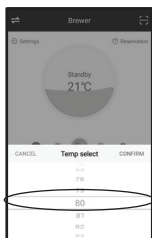
- ⦿ Current brewer operation status
- ⦿ Current or preset temperature
- ⦿ Current or countdown time

Follow these 5 steps to brew tea with your app:

1. Swipe left or right to select the tea type.
2. Tap to select operation mode:
 - a) Brew: automatic brewing,
 - b) Heat: water heating, or
 - c) Keep Warm: temperature maintaining
3. Tap to customize temperature.
4. Tap to customize time.
5. Tap to start/stop operation.



Before starting operation, ALWAYS ensure you have read and follow the instructions in the User Guide to have the Brewer properly set up for its intended use and operation mode.

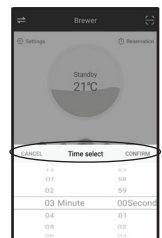


CUSTOMIZE TEMPERATURE & TIME

Flip up and down the numbered wheel to select the desired temperature or time for the tea type and operation.

Note: Before customization, ensure the Pot is on the Base and the Brewer is in Standby mode as shown in the images here.

Note: Once the temperature or time has been changed for the tea type, the values will be stored for future operations until the next customization.



You can customize the temperature and time for every tea type for each mode (Brew/Heat/Keep Warm) except for Cold Brew. For Cold Brew, only the brew time can be customized.

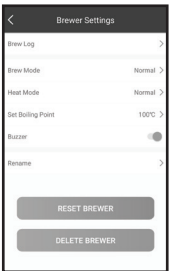
CUSTOMIZE BREWER SETTINGS

Tap on the 'Settings' icon of the Brewer Screen to access the Brewer Settings.



STEP 1

Tap on the 'Settings' icon.



STEP 2

Proceed according to the table below.

BREW LOG	This keeps track of your brewing history.
BREW MODE	<p>You can choose between Normal Brewing or Boil and Brew.</p> <p>How Boil and Brew works:</p> <ol style="list-style-type: none">1) Boils water to the boiling temperature (default 100°C/212°F).2) Waits until the water has cooled down to the preset temperature.3) Starts automatic brewing. <p>To set, tap on 'Brew mode'→'Boil and Brew' and then 'CONFIRM'.</p>
HEAT MODE	<p>You can choose between Normal Heating or Boil and Cool.</p> <p>How Boil and Cool works:</p> <ol style="list-style-type: none">1) Boils water to the boiling temperature (default 100°C/212°F).2) Waits until the water has cooled down to the preset temperature.3) Notifies you the heated water is ready for manual brewing. <p>To set, tap on 'Heat mode'→'Boil and Cool' and then 'CONFIRM'.</p>
SET BOILING POINT	Water boils at a lower temperature at higher elevations. Use this setting to adjust the boiling point between 90°C (194°F) to 100°C(212 F) for proper functioning of the Brewer at high elevation locations.
BUZZER	You can turn on or off the Brewer sounds with this setting.
RENAME	You can rename your Brewer with this setting.
RESET BREWER	You can reset your Brewer to the default settings with this button.
DELETE BREWER	You can delete your Brewer from the app with this button.



For proper functioning, DO NOT use the Brewer at places where water boils below 90°C/194°F (e.g. >2800m/9200ft above sea level).

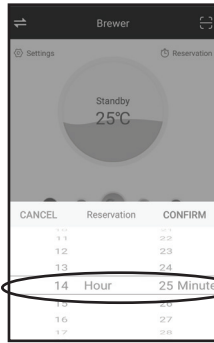
RESERVATION TIMER

You can set the reservation timer up to 24 hours in advance for your selected Brew mode.



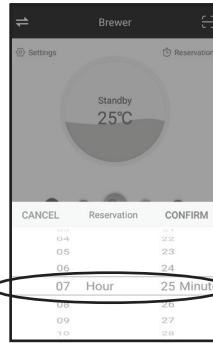
STEP 1

Select tea type and tap Reservation.



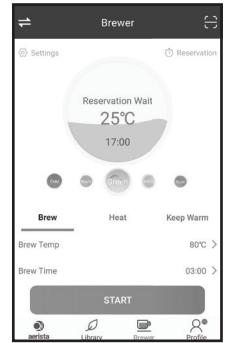
STEP 2

A clock menu should appear, displaying your current time, which is 14:25 in this case.



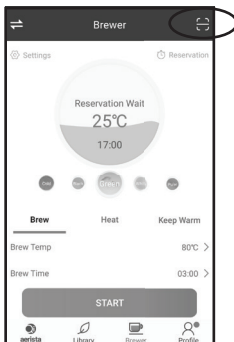
STEP 3

Set the desired start time. Then tap 'CONFIRM'. (Here 7:25 tomorrow has been set as an example.)



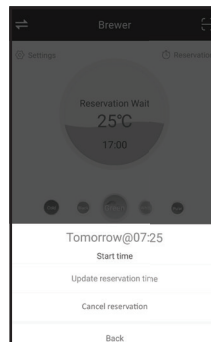
STEP 4

The Status Display shows the 'Reservation Wait' status with the countdown time to start of brewing. (Here it shows 17 hours as an example.)



STEP 5

Tap Reservation again on the Brewer Screen to make changes to the reservation if needed.



STEP 6

Tap 'Update' or 'Cancel' the reservation as desired.



ALWAYS ensure the Pot is properly placed on the Base and is filled with clean drinking water between the 'MAX' and 'MIN' line before initiating reservation timer.

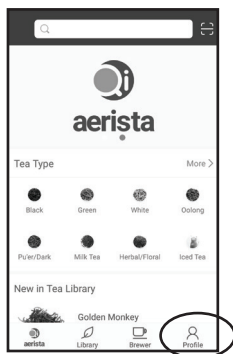


Before starting reservation timer, ALWAYS ensure the Brewer has been properly set up according to the instructions in the Usage Guide.

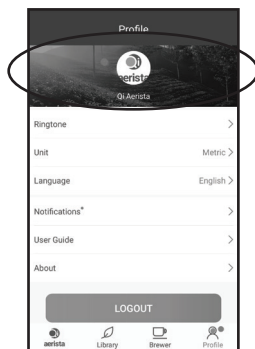


Reservation timer is only available in Brew mode.

PROFILE SCREEN FEATURES

**STEP 1**

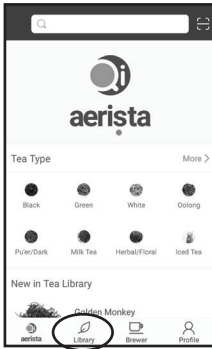
Tap on the Profile icon.

**STEP 2**

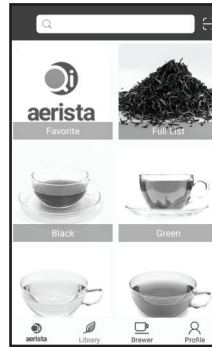
Tap on the image to update User Info. For other changes, proceed according to the table below.

USER INFO	Update your profile information (i.e. Profile Picture, Nickname, Gender, Region, Reset Password).
RINGTONE	Select your desired ringtone.
UNIT	Metric/Celsius is the default. Choose Imperial for displaying temperature in Fahrenheit.
LANGUAGE	English is the default. Chinese is the option.
NOTIFICATION	System push notifications from Qi Aerista.
USER GUIDE	Access our online user guide for the Brewer and app.
ABOUT	App version.
LOGOUT	Log out of the app.

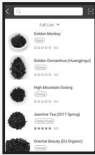



TEA LIBRARY FEATURES

**STEP 1**

Tap on the Library icon.

**STEP 2**

Proceed according to the table below.

TEA LIST	Select a tea from our Tea Library to learn more about its information, brewing directions, and reviews.	
SCAN	You can tap on the Scan icon on the top right of the screen to scan the QR code on the Qi Aerista tea packages and access the tea information.	
LET'S BREW	<p>Step 1 - Follow the Usage Guide to prepare the Brewer with water and tea leaves for brewing. Then place the Pot on the Base. Ensure the Brewer is turned on at standby.</p> <p>Step 2 - Tap 'LET'S BREW' on the Tea screen to send the brewing settings to the Brewer. The light on 'Custom' will illuminate on the Base.</p> <p>Step 3 - Brewer Screen will appear with the selected tea displayed. The existing temperature and time settings for 'Custom' will be updated.</p> <p>Step 4 - Select 'Brew' or 'Heat'. Tap on 'Start' to begin.</p>	 

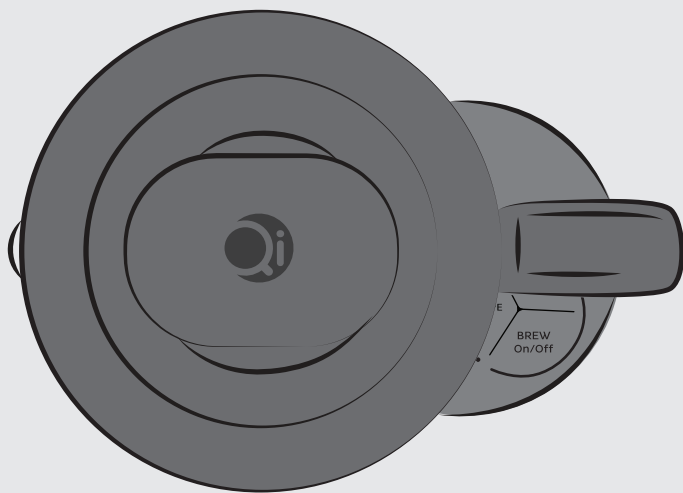
I've already connected to my Brewer, but it shows that the Brewer is offline.	Ensure the Brewer is turned on. Restart the app and the app should reconnect with the Brewer automatically.
The light has gone off sometime after I switched on the Brewer.	The Brewer is in standby mode right after it is turned on. If no button has been pressed on the Base or it does not receive any operational command from the app, the Brewer will automatically turn itself off after 15 minutes in standby.
How do I change from Celsius to Fahrenheit on the app?	You can switch to Fahrenheit on the Profile Screen via the Unit setting. Please refer to App Guide on Profile Screen.
After brewing begins, there are bubbles appear near the Flow Tube.	Those are air bubbles created by our patented circulative infusion process, which is driven by air. A small amount of air may escape into the Pot during brewing, which is normal.
The Lid pops up during brewing.	<ol style="list-style-type: none"> 1) Ensure the contact surfaces between the Lid and Infuser are clean and free of debris and oily substances. 2) Ensure the Lid has been properly aligned and securely attached to the Infuser. 3) Ensure the Flow Tube, Spray Cap and Sheath are properly installed inside the Pot. 4) Ensure you don't overfill the Infuser with tea leaves. They may expand during brewing and push open the Lid.
Why is the Brewer not brewing as it normally would, and the tea brewed is weaker than usual?	<ol style="list-style-type: none"> 1) Ensure the Flow Tube, Spray Cap and Sheath are properly installed within the Pot. 2) Ensure the Infuser and Filter are properly installed within the Pot. 3) Ensure the Lid is securely closed during operation. 4) Ensure enough water has been added that is within the 'MAX' and 'MIN' levels. 5) For best brewing results for Cold Brew and brewing temperatures below 60°C/140°F, we recommend adding between 2 to 3 cups of water.
There are tea leaves stuck in the Filter. How do I clean it?	<ol style="list-style-type: none"> 1) Remove the Filter, rinse it with water. 2) Re-attach the Filter, ensuring the clip goes outside of the Infuser.
After brewing, I saw that the Infuser has colored shades or stains. What is it?	The stain is most likely water residue. Follow the Cleaning and Care section to remove if desired.
I brewed green tea and I can taste the flavor from my last brew of black tea. What should I do?	Always ensure that the instructions in the Cleaning and Care section is followed. For a deeper cleaning, please follow the cleaning procedures in the Before First Use section.
I would like to have the Brewer's default settings back.	On the app, go to Brewer setting → tap on Settings → tap on Reset Brewer.
What smartphones does the app support?	Android – 4.0 or above iOS – iOS 7 or above; iPhone 5 or above
For any other questions	Please contact us at support@qiaerista.com.

Thank you for your purchase of Qi Aerista Smart Tea Brewer. Keyway Innovations Limited (hereinafter KIL) will offer one (1) year warranty service from the date of email registration through our email: support@qiaerista.com within the limit of the following conditions:

- ④ This warranty will be valid only if the email registration is completed within 30 days upon receiving the Brewer as indicated by KIL's shipment tracking records, failing which this warranty will be null and void.
- ④ The email registration is regarded as completed if the following information has been provided (a) name; (b) email address; (c) mailing address; (d) contact number; (e) date of receiving the product; and (f) invoice/order number.
- ④ This warranty covers the product repairs or replacement on any defects which in our judgment is caused (a) due to faulty materials and workmanship; (b) under normal use and maintenance in a manner that is strictly adhered to the instructions as described in the Qi Aerista Smart Tea Brewer User Guide.
- ④ This warranty does not cover product and/or product parts that are subject to wear, that can be considered as consumable parts by their nature or that are made of glass.
- ④ This warranty shall automatically be void if (a) the defect is due to damage caused by incorrect use and/or poor maintenance (e.g. parts blocked by scale); (b) it has been explicitly or implicitly modified, opened, tempered with altered or repaired in any way by persons not authorized by KIL; or (c) it has become malfunctioned due to power interruption or abnormal voltage input.
- ④ For services, the user will be responsible for the transportation and customs duties of the product to and from our service center for repair.
- ④ For any issues, please contact Qi Aerista at support@qiaerista.com.



At the end of its service life, this product may not be disposed of in the normal household waste, but rather must be disposed of at a collection point for recycling electrical and electronic devices. The materials are recyclable according to their labelling. You make an important contribution to protecting our environment by reusing, recycling or utilising old devices in other ways. Please ask the municipal administration where the appropriate disposal facility is located.



TOUCHING HEARTS WITH TEA



WWW.QIAERISTA.COM

Keyway Innovations Limited
907, Tower 2, Silvercord, 30 Canton Road
Tsimshatsui, Kowloon, Hong Kong